

## **SCDHEC Safety Assessment**

Thursday, April 12<sup>th</sup>, 2018  
Great Falls Elementary School

School population (426)

School dismissal (2:44 - 3:11)

4 - 5 total buses depending on day of the week and bus driver availability

Children arrive at 7:00 to be dropped off (1) faculty member present until tardy bell rings at 7:55

No curb cuts in the event a child is in a wheelchair

Handicap parking does not meet ADA Guidelines. (Please see photo)

(2) instances where curbside loading and unloading was not done (one during drop-off and one during pick-up)

High number of vehicles observed passing cars and cutting in front of cars during morning drop-off (speed an issue as well)

High number of vehicles observed passing cars during evening pick-up (speed an issue as well)

### **Occupant Restraint Survey Results:**

DHEC's Division of Injury and Violence Prevention (Neal Martin and Kevin Poore) conducted an assessment on April 12, 2018, observing use of occupant restraints and child passenger safety restraints. The results included:

- 70 drivers picking up children were observed wearing their seat belt
- 25 drivers picking up children were observed not wearing their seat belt  
(74% of drivers recorded were wearing their seatbelt)
- 24 children were observed wearing their seat belt in the front passenger seat leaving pick-up line
- 28 children were observed not wearing their seat belt in the front passenger seat leaving pick-up line
- 19 children were observed wearing their seat belt in the back passenger seat leaving pick-up line
- 85 children were observed not wearing their seat belt in the back passenger seat leaving pick-up line

\*\*\* 67 children were observed leaving school property completely unrestrained (59% of total children observed)

\*\*\* 2 child safety seats were observed being used

\*Most children observed during morning drop-off were unrestrained prior to vehicle coming to a complete stop

\*Many children observed during morning drop-off arrived to school wearing their book bag and riding in the front seat

\*Many children observed during morning drop-off were standing in the vehicle prior to vehicle coming to a complete stop

\*Most children observed should be riding in a booster seat in the back seat

(10) instances where the front door of the vehicle was opened by a faculty member (pick-up line)

(1) golf cart used to pick up a child

(1) large dog being held in the front seat by a parent in the pick-up line (dog was between driver and steering wheel)

#### Important reminders:

The passenger side airbag deploys at over 200 mph

Children under 13 should ride in the back seat

Best practices indicate that children under 4'9" and 80 pounds should ride in a booster seat and all children under age 8 must be in an appropriate child safety seat (South Carolina State Law "Section 56-5-6410")

To view the complete text of the SC Child Passenger Law and to learn more about safety belt laws in South Carolina, visit: [www.buckleupsc.com](http://www.buckleupsc.com)

#### Recommendations:

Invide staff from the SC Department of Health & Environmental Controls Division of Injury and Violence Prevention to talk with the PTA/PTO about child passenger safety and the proper use of child safety seat restraints (Neal Martin 803-898-7310).

Any questions regarding past traffic studies/recommendations by the SC Department of Transportation should be directed at Mark Faulk (803-737-1739) as Chester County is in his jurisdiction.

Request new signage

Request new paint on designated asphalt surfaces

Request a ladder style crosswalk to protect teachers/children parking and walking across drop-off line and pick-up line

Have all faculty working drop-off/pick-up lines wear reflective vest and obtain a hand held stop/slow paddle

Prevent cars from passing by using orange cones to block outside open lane during drop-off and pick-up

Consider installing better pedestrian lighting where children are dropped off

Establish a “Buckle Up Zone” so that parents can pull over to make sure children are buckled up and book bags are removed and stowed away.

It should be highly encouraged that only the rear door be opened by faculty to reduce liability and to be consistent with state law. Only if all seat belts are occupied in the back should a child be restrained in the front seating position

During pick-up, children should only be loaded at the breezeway area (some children were loaded as far up as the tree area) to keep vehicles pulling all the way up and not backing up the flow thus causing parents to pass

Consider double stacking existing car rider line

Consider flipping car rider line and bus loop

Consider hosting a free child safety seat inspection event

**It should be noted that the school faculty is highly concerned with student safety on school grounds and off. Clear and concise communication was observed from faculty members and children were encouraged to be ready for pick-up.**

Neal Martin, Program Coordinator II  
SC DHEC, Injury & Violence Prevention  
2100 Bull Street  
Columbia, SC 29201  
803-898-7310

## ADA Assessment Report

---

Name of Facility: Great Falls Elementary School

Primary Contact: Melody C. Reid

Address: 301 Dearborn Street, Great Falls, SC 29055

Assessment Date: April 12, 2018

Auditor's Name: Jevettra Gardner

---

**ACCESSIBLE PARKING** – There is currently no accessible parking located in the school pick-up and drop-off zone (this was noted in the DHEC report on the ways to increase accessibility in the area).

There is one accessible parking space at the main entrance of the school. However, the striped area is being misused by individuals. Individuals should NOT be parked in the striped area. If the person driving the minivan is utilizing a wheelchair, they would not be able to get into their car because of the white Jeep.



**Picture 1**



**PLAY STRUCTURE ASSESSMENT** – The below structures are not ADA accessible as there is no transfer with this structure. A person in a wheelchair would have to lower themselves to the ground before they could access the stairs safely. Additionally, there are too many stairs for a person with a disability to navigate in order to get on the other side.



**Picture 2**



**Picture 3**



**Picture 4**



**Picture 5**

- The lowest set of stairs on the playground equipment does not have handrails installed on both sides of the stairs. The second set of steps from the transfer bench is too high.

## **ADA Standards:**

**505.2 – Handrails: Where required.** Handrails shall be provided on both sides of stairs and ramps.

**Exception:** In assembly areas, handrails shall not be required on both sides of aisle ramps where a handrail is provided at either side or within the aisle width.

**505.4 – Handrail Height.** Top of gripping surfaces of handrails shall be 34 inches (865 mm) minimum and 38 inches (965 mm) maximum vertically above walking surfaces, stair nosing's, and ramp surfaces. Handrails shall be at a consistent height above walking surfaces, stair nosing's, and ramp surfaces.

- **Advisory – 505.4 – Height.** The requirements for stair and ramp handrails in this document are for adults. When children are the principal users in a building or facility (e.g., elementary schools), a second set of handrails at an appropriate height can assist and aid in preventing accidents. A maximum height of 28 inches (710 mm) measure to the top of the gripping surface from the ramp surface or stair nosing is recommended for handrails designed for children. Sufficient vertical clearance between upper and lower handrails, 9 inches (230 mm) minimum, should be provided to help prevent entrapment.

**1008.3 – Transfer Systems.** Where transfer systems are provided to connect to elevated play components, transfer systems shall comply with 1008.3

- **Advisory – 1008.3 – Transfer Systems.** Where transfer systems are provided, consideration should be given to the distance between the transfer system and the elevated play components. Moving between a transfer platform and a series of transfer steps requires extensive exertion for some children. Designers should minimize the distance between points where a child transfers from a wheelchair or mobility device and where the elevated play components are located. Where elevated play components are used to connect to another elevated play component, instead of an accessible route, careful consideration should be used in the selection of the play components used for this purpose.

**1008.3.1 – Transfer Platforms.** Transfer platforms shall be provided where transfer is intended from wheelchairs or other mobility aids. Transfer platforms shall comply with 1008.3.1.

- **1008.3.1.1 – Size.** Transfer platforms shall have level surfaces 14 inches (355 mm) deep minimum and 24 inches (610 mm) wide minimum.
- **1008.3.1.2 – Height.** The height of transfer platforms shall be 11 inches (280 mm) minimum and 18 inches (455 mm) maximum measured to the top of the surface from the ground or floor surface.

**1008.3.2 – Transfer Steps.** Transfer steps shall be provided where movement is intended from transfer platforms to levels with elevated play components required to be on accessible routes. Transfer steps shall comply with 1008.3.2.

- **1008.3.2.1 – Size.** Transfer steps shall have level surfaces 14 inches (355 mm) deep minimum and 24 inches (610 mm) wide minimum.
- **1008.3.2.2 – Height.** Each transfer step shall be 8 inches (205 mm) high maximum.

## **RECOMMENDATIONS**

- Remove wood chips and install pour in rubber padding (like other playgrounds on campus have).
- Install handrails on the second set of steps leading up to the playground equipment.
- Add an additional step to the second set of steps allowing for there to be a shorter transfer step to make it further in to the play equipment.



## Great Falls Elementary Walkability Assessment Results April 12<sup>th</sup>, 2018

### **Participating:**

Melody Reid  
Candra Riley  
Elizabeth Rowe  
Jevettra Gardner  
Kathy Brewer

### **Dearborn Street**

Across the street from Great Falls Elementary School to the right of IGA

#### **Positives**

Sidewalks on both sides of the street  
Wide sidewalks  
Street lights present  
Green scape installed  
Curb cut at Underwood Ave to cross to other side of street  
Speed limit sign for 25 miles per hour  
People crossing signage

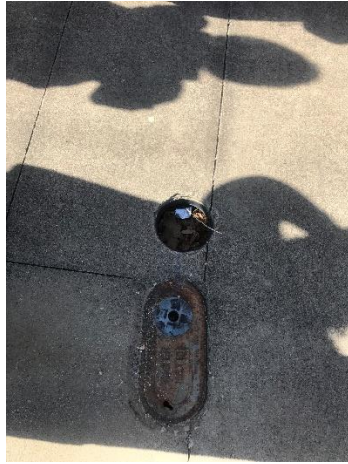


#### **Challenges**

Curb cuts not marked at crosswalk  
Gravel covering sidewalk at storefront near Police Station  
Green scape needs maintenance  
Uncovered water main in sidewalk at telephone pole near alley way  
Multiple vacant stores  
Some store awnings need replacement/repair  
No curb cut to cut across Underwood Ave & side walk ends  
Cracks in side walk in front of "Browning T" store front  
No cross-walk markings



Yellow Caution Tape wrapped around street light pole in front of Gladden Hudson Realty/GF Tax Service





**Across the street from Great Falls Elementary School to the left IGA**

**Positives**

Street has center & side markings

Corner of Underwood Ave/Walnut has ADA curb cut marked in yellow

Sidewalks in good repair



**Challenges**

No cross walk marking at corner of Underwood Ave/Walnut

Argonne Street without street signage, no cross walk marking, no curb cut no sidewalk access

Need guard rail on right of sidewalk with sharp drop off

Storm drain with sharp drop off beside sidewalk

Calhoun Street without curb cut, no cross walk marking

Cracks in sidewalk near old Fire Dept

Sidewalk ends at Chester Ave





### **Dearborn Street at Down Town Area**

#### **Positives**

Curb cuts at Circle J, Truvista  
Sidewalks on both sides of the street

#### **Challenges**

Abandon store fronts  
Over grown tree at Church Street near Truvista area  
Cracks in sidewalks at Church Street, Old mill area  
Side walk ends  
Side streets without street markings  
Side streets without street name signs  
Side streets without sidewalks

### **Dearborn Street at Presbyterian Church**

#### **Positives**

Grass buffer at sidewalk  
Sidewalks in good repair  
Signage marking Student Crossing  
War Memorial building across the street from Baseball field  
Sidewalk on side of Baseball field

#### **Challenges**

Marked cross walk goes into fence without sidewalk on School side

**OTHER:**

During riding tour, several residents in cars and one on golf cart stopped and asked if we needed any help.

Sandra, resident shared that she feels there is good opportunity to walk in some areas. Mill hill has biggest challenges with narrow streets and no sidewalks. Some people go to First Baptist Church to park and then walk. There is walking track at High School around football field. There is a small walking trail in the woods near baseball field but not well kept. Walking available at Mor-gon company area. She would like to see public walking track more centralized. There are very few bike riders.

Home Town Association is working on hiking trail.

River access available.

Feed Store permanently closed

No major bank-has Spratt Savings & Loan and ArrowPointe

Mill town with 3 mills in past but one burned in the 1990's & other two closed.